

AERIN



SINCE 1823

LEE JOFA

LEEJOFA.COM

A woman with long, wavy brown hair is standing in a room, wearing a long, dark blue, sleeveless dress with a high neckline and a long, flowing skirt. She is looking towards the camera with a slight smile. The room has a white door behind her, a chandelier with crystal droplets to the left, and a leopard print chair to the right. The floor is covered with a light-colored, textured rug.

# AERIN

The AERIN for Lee Jofa fabric collection features exclusive prints, weaves, and embroideries in classic designs with updated detailing in a sophisticated palette. The result is a look that echoes Aerin's personal style: effortless, timeless, and unmistakably modern. Soft florals and bold geometrics pop on rich velvet and crisp linen. The luxurious fabrics are the ideal canvas for Aerin's statement patterns.

The AERIN for Lee Jofa carpet collection's versatile range of materials allows for a variety of textures, from cool cotton flatweaves to lush silk and rich hand knotted wool pile. Custom and in stock rugs in a coordinating color palette, ranging from subtle and romantic to vibrant and dramatic, allow effortless mixing and matching from room to room.

A perfect complement to the fabric collection, the AERIN for Lee Jofa furniture collection combines classically understated silhouettes with an invitingly unexpected mix of materials. Unique and elegant, each piece evokes the timeless quality evident in Aerin's own lifestyle.

AERIN is a global luxury lifestyle brand inspired by the signature style of its founder, Aerin Lauder. With a passion for art, travel, fashion and design, Aerin's own lifestyle serves as a focal point of inspiration for the brand. Classic, but always with a modern point of view, every piece is created to make life more beautiful, with a sense of ease and refinement.

**“Beauty is my heritage, but home decor is very much my passion.”**

**– Aerin Lauder**



Table skirt: Hither in Red/Juniper 2013121-639, Trim: Carousel Bullio in Ivory T2003501-16.



Seafield in Orange/Leaf  
2013124-324



Hither in Pink/Green  
2013121-173



Meadowood in Mist  
2013119-11



Seafield in Cerulean/Blue  
2013124-515



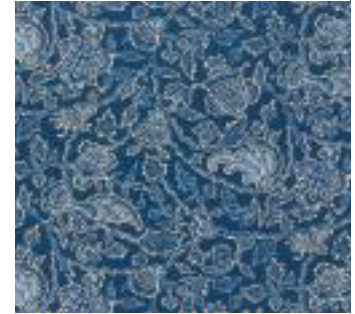
Meadowood in Alabaster  
2013119-101



Seafield in Pink/Aqua  
2013124-715



Noyak in Dusk Blue  
2013117-15



Marila in Blue  
2013125-516



Noyak in Oyster  
2013117-101



Sayre in Opal  
2013122-743



Mirasol in Prussian  
2013128-50



Watersedge in Aqua  
2013120-53



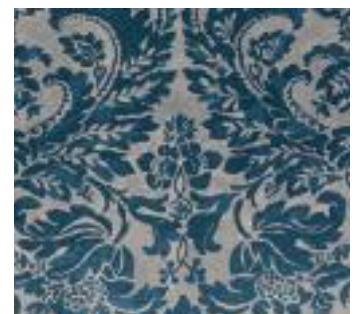
Mirasol in Linen  
2013128-16



Seafield in Teal/Pink  
2013124-753



Camberly in Dusk Blue  
2013118-515



Montrose Velvet in Topaz/Flint  
2013127-511



Watersedge in Grey  
2013120-11



Marila in Dusk  
2013125-511



Kenlyn in Blue/Tan  
2013123-516



Sayre in Blue  
2013122-515



Kenlyn in Green/Blue  
2013123-315



Camberly in Juniper  
2013118-3



Montrose Velvet in Onyx/Topaz  
2013127-408



Hither in Mocha/Brown  
2013121-668



Watersedge in Green  
2013120-23



Sayre in Grey  
2013122-11



Talmage in Oro  
2013129-4



Montrose Linen in Ruby  
2013126-919



Hither in Leaf/Forest  
2013121-323



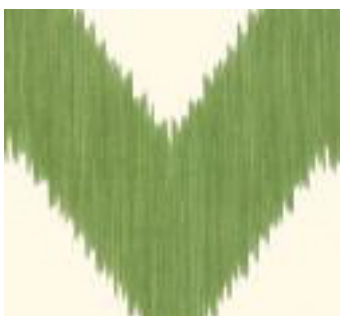
Camberly in Dove  
2013118-11



Montrose Linen in Chocolate  
2013126-68



Watersedge in Red  
2013120-19



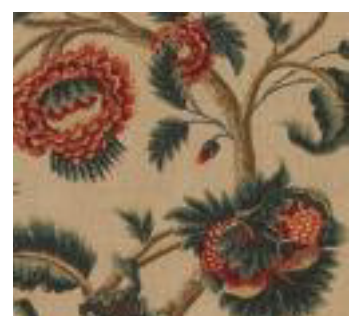
Mirasol in Ivy  
2013128-23



Montrose Linen in Amethyst  
2013126-10



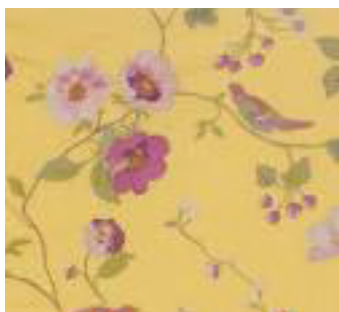
Watersedge in Brown  
2013120-68



Hither in Red/Juniper  
2013121-639



Montrose Linen in Verdi  
2013126-30



Meadowood in Buttercup  
2013119-40



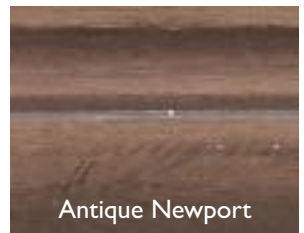
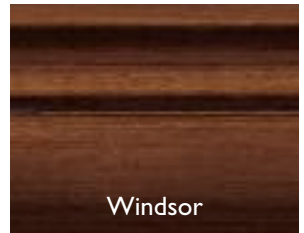
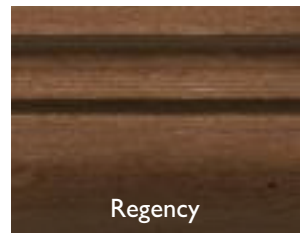
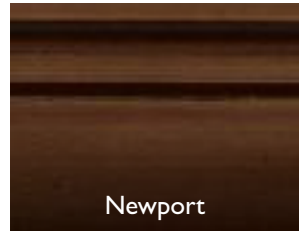
Marila in Brown  
2013125-68



Montrose Velvet in Plum/Red  
2013127-910



## AERIN UPHOLSTERY FINISHES





**THE CARLISLE TIGHT BACK SETTEE**  
**AL4100-5**

OW	OD	OH	SD	SH
65	38.5	35	24	17.5



**THE CARLISLE TUFTED BACK SETTEE**  
**AL3100-5**

OW	OD	OH	SD	SH
65	38.5	35	24	17.5



**THE CARLISLE TUFTED BACK CHAIR**  
**AL3100-20**

OW	OD	OH	SD	SH
31	37.5	35	24	17.5



**THE CARLISLE TIGHT BACK CHAIR**  
**AL4100-20**

OW	OD	OH	SD	SH
31	37.5	35	24	17.5

THE LOCKWOOD



**THE LOCKWOOD DAYBED**  
**AL3108-5**

OW	OD	OH	SD	SH	AH	IW
70	24	27	24	17	27	55







**THE LEWIS SOFA**  
**AL3116-7**

OW	OD	OH	SD	SH	AH	IW
90	41.5	34	26	16.5	23	80

**THE LEWIS MID SOFA**  
**AL3116-6**

OW	OD	OH	SD	SH	AH	IW
62	41.5	34	26	16.5	23	52



# THE MADISON



**THE MADISON ROLLBACK SOFA**  
**AL3112-7**

OW	OD	OH	SD	SH
87	39	34	23	17



**THE MADISON ROLLBACK LOVESEAT**  
**AL3112-5**

OW	OD	OH	SD	SH
58	39	34	23	17



**THE MADISON ROLLBACK CHAIR**  
**AL3112-20**

OW	OD	OH	SD	SH
26	39	34	23	17



**THE AERIN GOLD GILT WASHINGTON BOOKCASE  
OTA3102**

OW	OD	OH
42	14	84

THE LAIGHT • THE CROSBY



**THE ZEBRAWOOD LAIGHT END TABLE  
OTA3103**

OW	OD	OH
39.5	39.5	28.5



**THE ZEBRAWOOD CROSBY COCKTAIL TABLE  
OTA3104**

OW	OD	OH
48	48	20



**THE AERIN GOLD GILT FAIRVIEW END TABLE  
OTA3105**

OW	OD	OH
25.5	25.5	25



**THE COCOA LACQUER AND GOLD LEAF MAYLEN SIDE TABLE  
OTA3141**

OW	OD	OH
22	24	22



**THE MIRROR GRAND SIDE TABLE  
OTA3142**

OW	OD	OH
24	24	25.5



**THE BLACKWOOD STONE GRAND SIDE TABLE  
OTA3142BL**

OW	OD	OH
24	24	25.5



**THE COCOA LACQUER BRIDLE MIRROR**  
**OTA4101**

OW	OD	OH
48.5	2	68.5

Mirror may be hung vertically or horizontally.



**THE RENAISSANCE WARWICK MIRROR**  
**OTA4100**

OW	OD	OH
45	3	58

Mirror may be hung vertically or horizontally.



The Carlisle Tight Back Chair AL4100-20, Meadowood in Alabaster 2013119-101; The Blackwood Stone Grand Side Table OTA3142BL; Carpet, Lafayette - Iris.

In Stock • Wool and Silk Aubusson • Available in 6x9, 8x10, 9x12, 10x14



Lafayette - Heather



Lafayette - Iris



Lafayette - Sandshell



Cortlandt - Slate/Sand



Cortlandt - Warm Taupe



Fiske - Bermuda

In Stock • Cotton Flatweave • Available in 5x8, 8x11, 9'6x13'6, 11'6x14'6



Fisher - Ivory/Caramel



Fisher - Ivory/Sage



In Stock • New Zealand Wool Dhurrie • Available in 5x8, 8x11, 9'6x13'6, 11'6x14'6



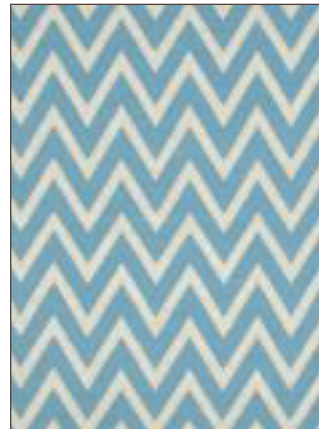
Counterclockwise: Holly - Burnt Orange, Moss, Stone, Sky.



Holly - Burnt Orange



Holly - Moss



Holly - Sky



Holly - Stone



Holly - Black



Holly - Brick Red



Holly - Espresso



Holly - Navy



Counterclockwise: Holly - Espresso, Navy, Brick Red, Black.



Left to Right: Cove Hollow - Cream/Blue, Bethune - Ivory/Cream, Jessup - Ivory/Khaki.

Hand Knotted Tibetan • Made to Order



Bethune - Ecru/Chocolate



Bethune - Ivory/Cream



Wellsmore - Ivory/Charcoal



Cove Hollow - Beige/Gold



Cove Hollow - Cream/Blue



Cove Hollow - Plum

Image is a digital representation of the actual carpet.

Hand Woven Flatweave • Made to Order



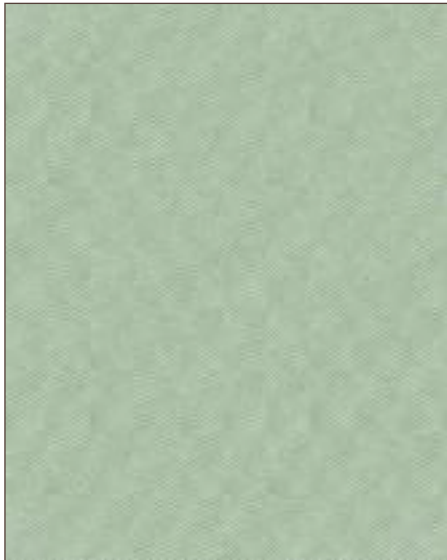
Jessup - Ivory/Khaki



Glenmore - Mushroom



Seneca - Chambray



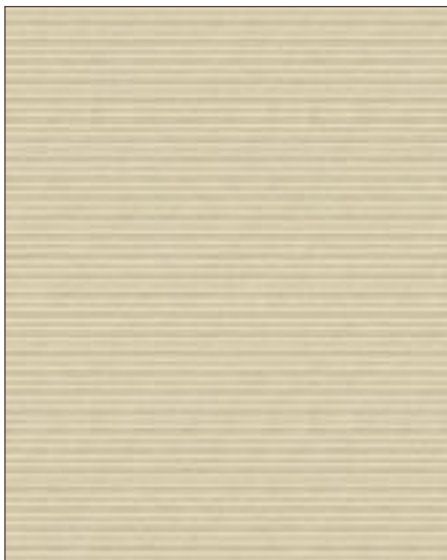
Jane - Aqua/Sky



Top to Bottom: Jane - Aqua/Sky,  
Jane - Ivory/Taupe, Stonewood - Ivory/Taupe,  
Sweetbriar - Cream/Aqua.



Jane - Ivory/Taupe



Sweetbriar - Cream/Aqua



Stonewood - Ivory/Taupe

Image is a digital representation of the actual carpet.



# LEE JOFA®

U.S. 800 453 3563 CANADA 800 535 3258 UK 44 (0)1202 266 700 LEEJOFA.COM

**Front Cover:** The Lockwood Daybed AL3108-5, Shoridge in Peashoot 2013115-23; The AERIN Gold Gilt Fairview End Table OTA3105; Carpet, Cortlandt - Slate/Sand.

**Back Cover:** Montrose Linen in Verdi 2013126-30.